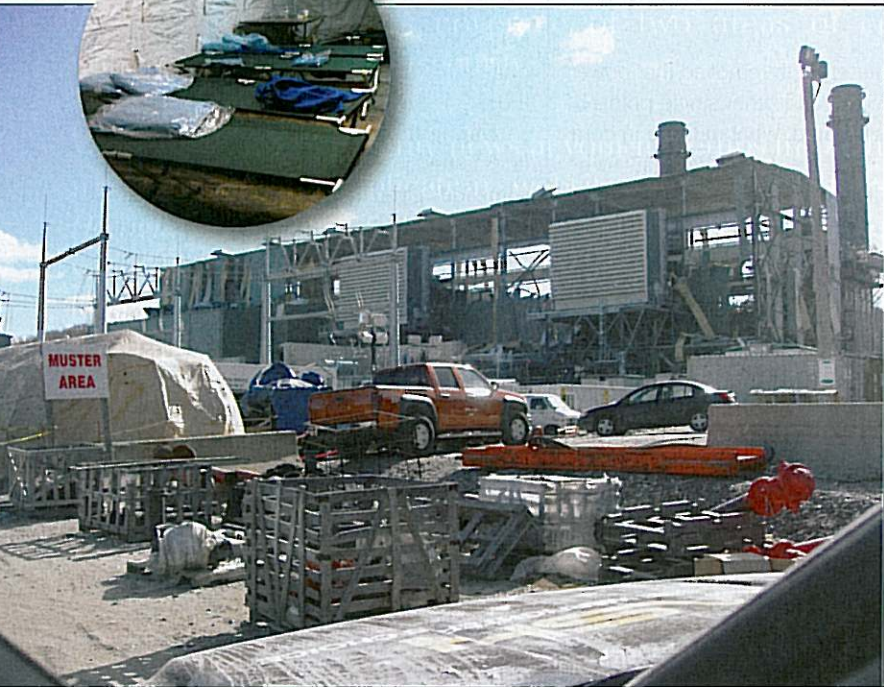


dense urban areas, seaside docking areas with giant cruise ships and container vessels, the Whistler ski resort and other key Vancouver 2010 Olympic Games venues. (Source: Presagis)

Hannah to manage justice and law enforcement programs.



Drash supports search and rescue efforts following plant explosion

The Connecticut Department of Public Health and Middletown Office of Emergency Management deployed shelters and lightweight field hospitals by DHS Technologies LLC, Orangeburg, NY, following the Feb. 7 explosion at the Klean Energy Systems plant in Middletown, Conn.

Personnel from Middletown's Office of Emergency Management and the state's Department of Public Health set up two DRASH shelters to support their efforts. Rescue workers organized and executed operations from a 249-square-foot DRASH 3XB Shelter, which, booted to a fire command vehicle, served as an incident command post at the scene of the explosion. Connecticut Gov. M. Jodi Rell (R) also received her first briefing inside that command post.

Nearby, workers were briefed inside a 413-square-foot DRASH Shelter. The shelter was later converted into sleeping quarters for responders who remained on site overnight. (Source: DHS Technologies LLC)